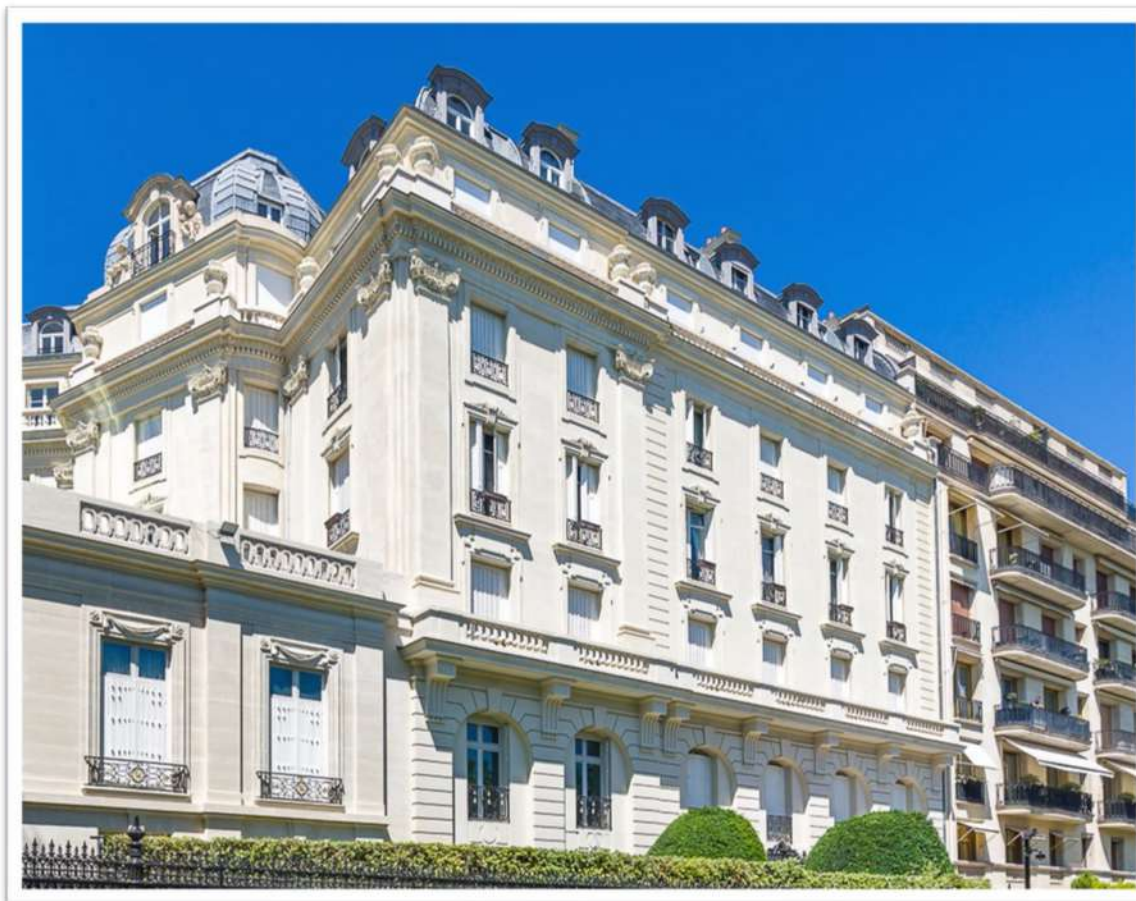


PARIS 16
FOCH



Price: 14.800.000 €

Area: 443 m2





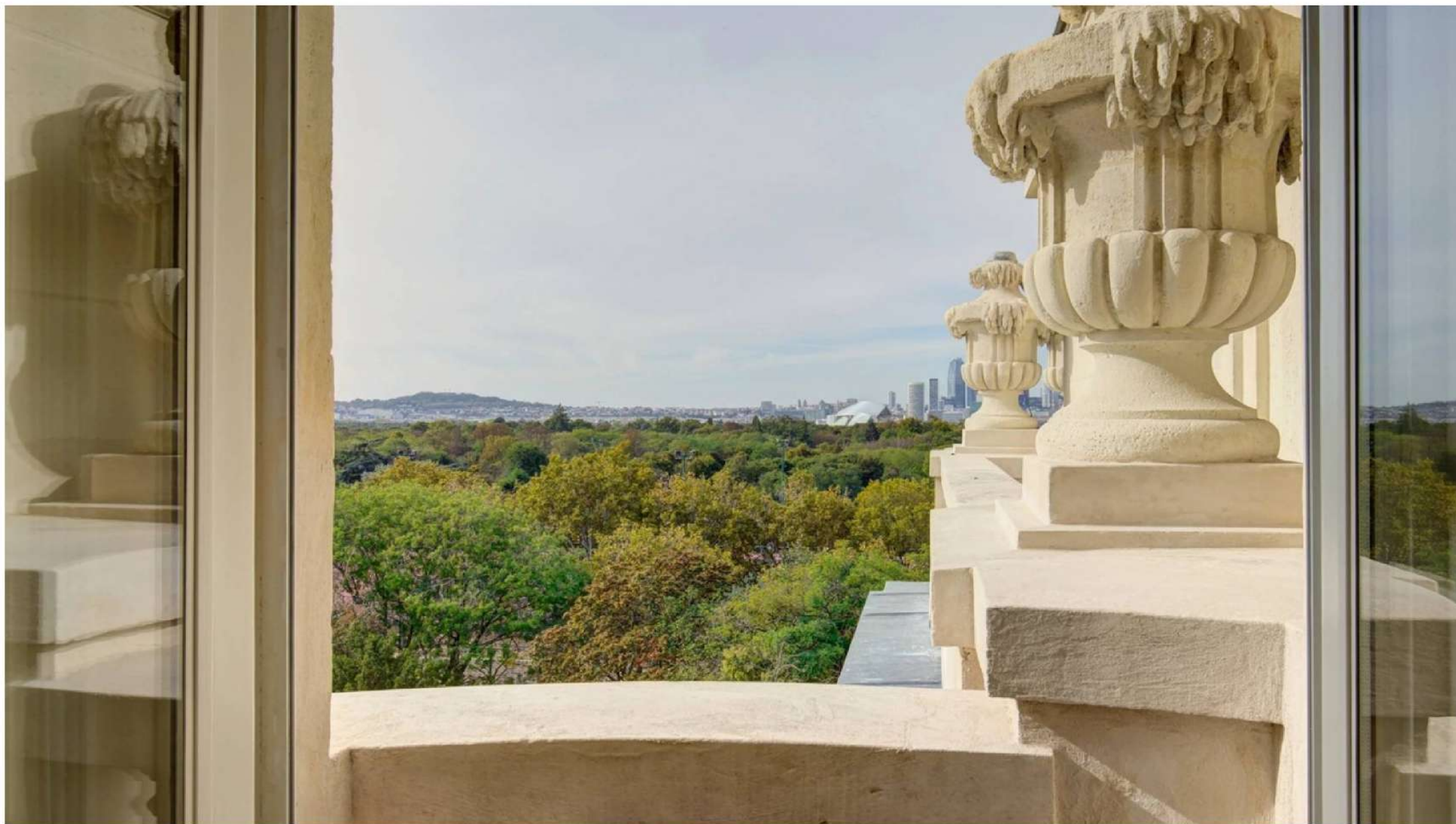
Entrance hall

GENERAL DESCRIPTION

At the end of the Avenue Foch at the Place Dauphine, in a beautiful building from the beginning of the 20th century built on the initiative of the industrialist Louis Renault and recently renovated, a large apartment with views of avenue Foch and Eiffel tower.

Double-glazed windows, electric roller shutters, home automation allowing control of lighting intensity, air conditioning in the living room, office and master.

Classic elements such as oak parquet flooring, ceilings with moldings, fireplaces, bathrooms with marble sinks.



DESIGNATION & SURFACES

Apartment of 443,19m² with 9 main rooms on the 5th floor with balconies.

It is composed of:

- Entrance,
- Gallery serving the reception rooms: dining room, living room, lounge, office, guest toilets.
- Master bedroom, dressing room, bathroom and toilets,
- Living room with kitchen,
- 4 bedrooms with dressing room and bathroom,
- Kitchen and service space, toilets.

The apartment is served by two elevators.

DESIGNATION & SURFACES

On the 6th floor with elevator to the 5th:

- 5 service rooms, one is used as a bathroom,
- Surfaces: 7,91m²-10,85m²-8,11m²-8,37m²et 12,06m²

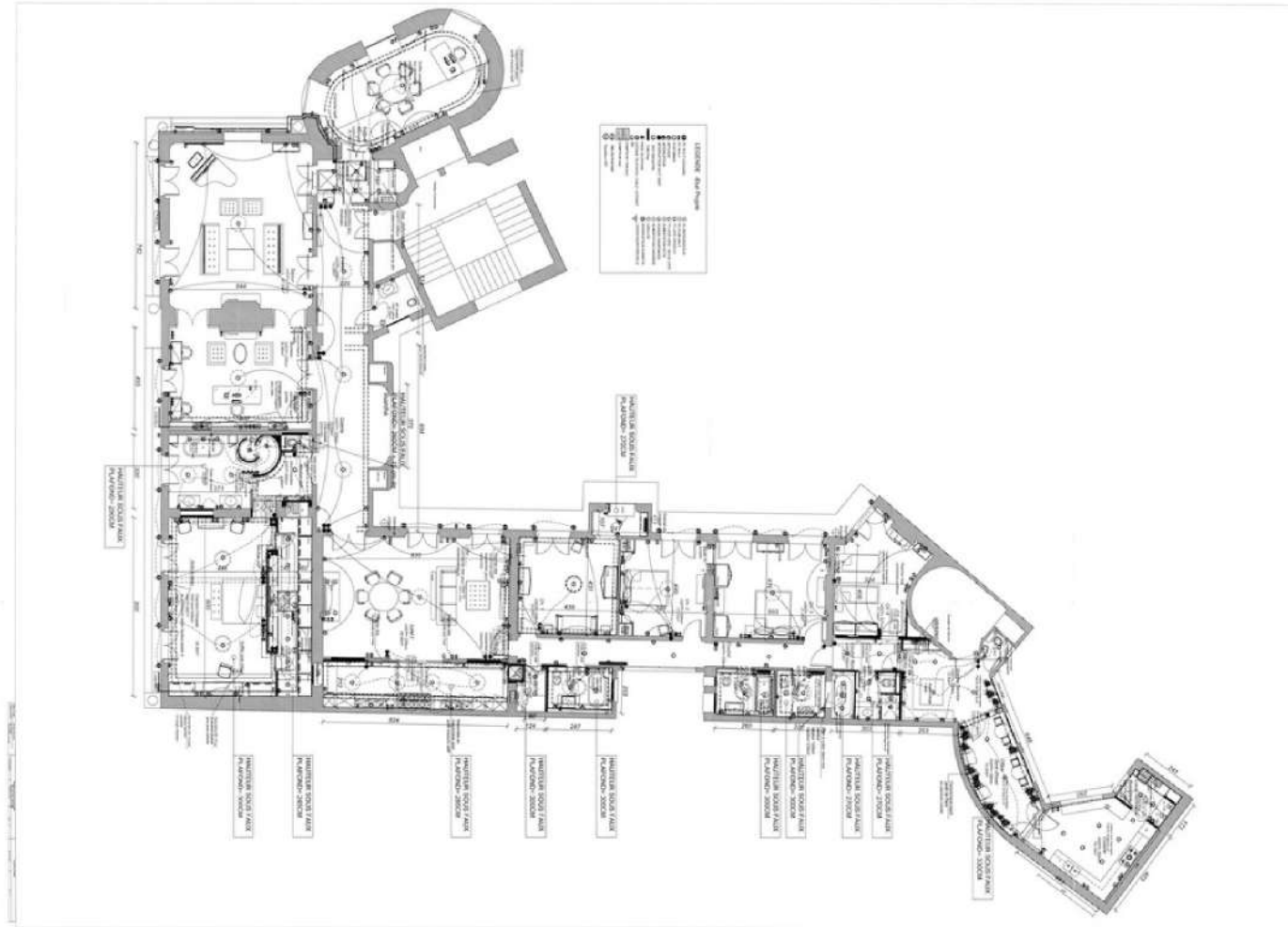
In the first basement:

- One closed garage and one parking space

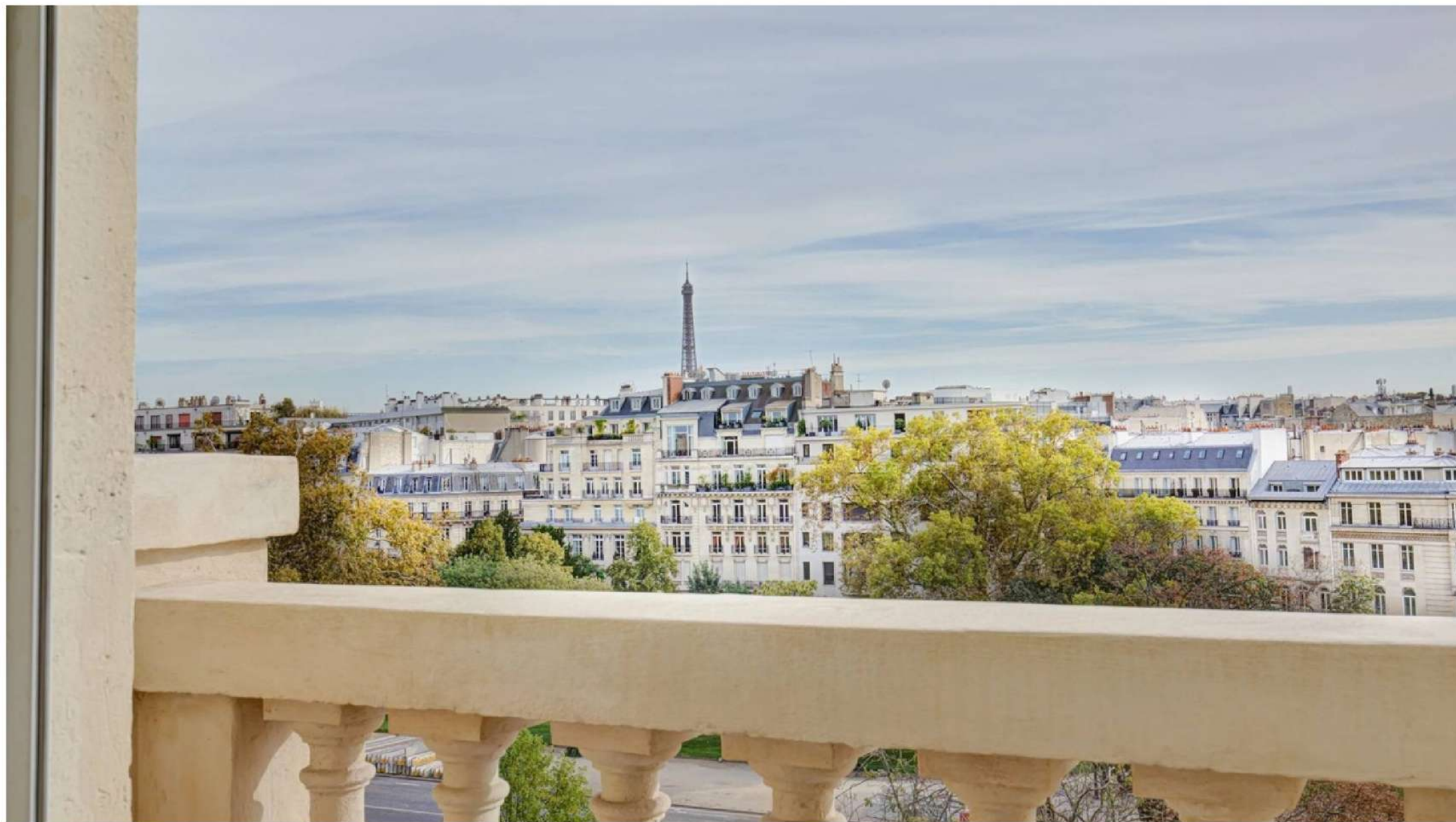
In the second basement:

- 2 cellars

PLAN 5th floor



Apartment:
443,19m²





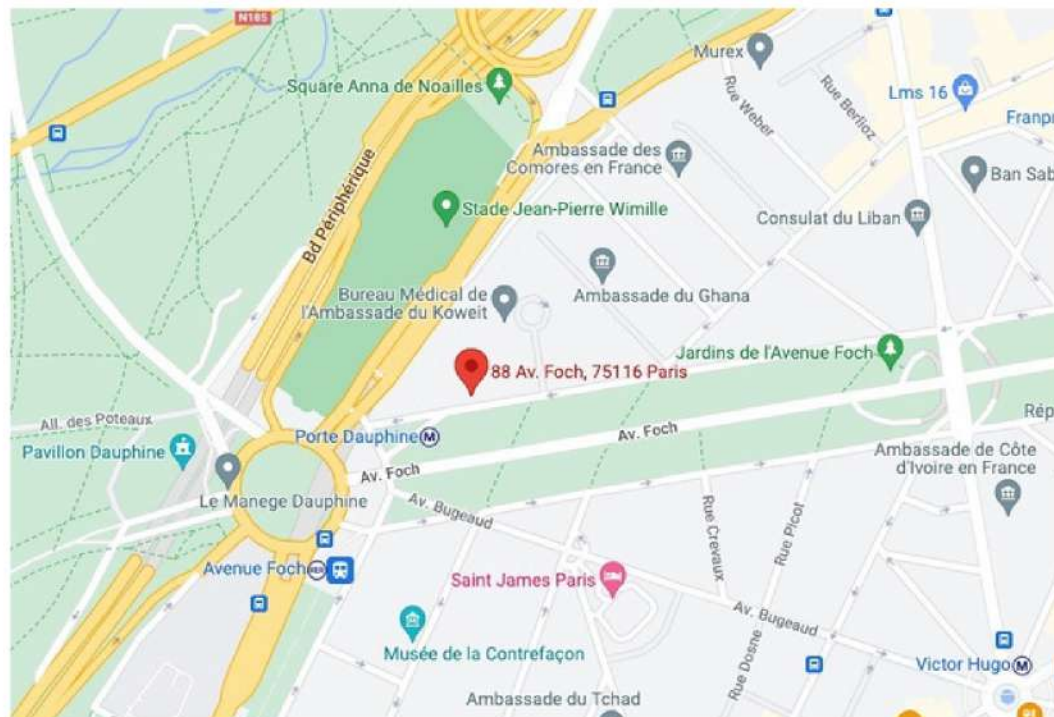








LOCALIZATION





CONTACT

Alexandra Yinying LI

李银盈 / 总经理

Tel / WhatsApp / WeChat:

+33 (0)6 85 42 45 08

Email:

all@ariane.com

